
LITELON

PRODUCT CATALOG

Electric Material Handling Equipment

Professional Manufacturer Since 2008



Factory Direct Sales · Quality Assurance · Customization Available · Global Delivery
Electric Forklift | Scissor Lift | Pallet Truck | Stacker | Reach Truck

COMPANY PROFILE

Factory Direct Manufacturer Since 2008

LITELON is a factory-direct manufacturer specializing in electric material handling equipment for warehouses, factories, logistics parks and industrial working sites.

Our product range covers electric forklifts, pallet trucks, stackers, scissor lift platforms, reach trucks and narrow-aisle forklifts.

With 400 employees and 30 R&D personnel, we integrate product development, production assembly, quality inspection and after-sales service.

We provide competitive purchasing costs, flexible customization, controlled delivery and long-term spare parts support for customers worldwide.

FACTORY & PRODUCT DISPLAY



CERTIFICATIONS



2008
Founded

18
Years Experience

400
Employees

30
R&D Personnel

160+
Patents & Certifications

3000+
Customers Served

50+
Countries & Regions



CONTENTS

Product Catalog Overview

- 01 Electric Forklift**
CPD15 / CPD20 / CPD25 / CPD30 / CPD35 / CPD40 / CPD50 / CPD70
- 02 Scissor Lift Platform**
Mobile / Mini Electric / Self-propelled / Crawler Type
- 03 Pallet Truck**
Manual / Semi-electric / Fully Electric Pallet Truck
- 04 Stacker**
Manual / Walking / Stand-on / Forward-moving / Self-lifting / Semi-electric
- 05 Reach & Narrow Aisle Truck**
CQD / CQDJ / CSD

ELECTRIC FORKLIFT



CPD15
ELECTRIC FORKLIFT



CPD20
ELECTRIC FORKLIFT



CPD25
ELECTRIC FORKLIFT



CPD30
ELECTRIC FORKLIFT



CPD35
ELECTRIC FORKLIFT



CPD40
ELECTRIC FORKLIFT



CPD50
ELECTRIC FORKLIFT



CPD70
ELECTRIC FORKLIFT

> HOT DEALS

CPD15 *Electric forklift*



型号/Model	CPD15
起升重量/Lifting weight	1500kg
总长/Total length	2300mm
总宽/Total width	1200mm
总高/Total height	2150mm
整车自重/Vehicle weight	2340kg
起升高度/Lifting height	3000mm
行走电机/Travel motor	3kw
液压电机/Hydraulic motor	3kw
电压/Voltage	60V (customizable)
电池/Battery	60V70AH*5 (customizable)
充电器/Charger	220V
前桥/Front axle	180 suspended cast steel front axle
轮胎/Tire	Front wheel 650-10/Rear wheel 500-8

产品优势/PRODUCT ADVANTAGES

1. The vehicle has a compact appearance, a small turning radius, and can work in narrow passages.
2. Light weight, energy-saving and convenient, and the control mechanism is flexible, reliable and safe.
3. Standard solid tires, stronger load-bearing capacity and life, and low maintenance costs.
4. Using batteries as the power source, pure power, no pollution, meeting national environmental protection requirements.
5. Equipped with advanced energy regeneration system, energy-saving and high efficiency, strong endurance.



Thickened forged front fork



Operating system



Thickened door frame



Hydraulic Cylinder



Comfortable seats



Safety warning tail light

CPD20 *Electric forklift*



型号/Model	CPD20
起升重量/Lifting weight	2000kg
总长/Total length	2300mm
总宽/Total width	1200mm
总高/Total height	2150mm
整车自重/Vehicle weight	2340kg
起升高度/Lifting height	3000mm
行走电机/Travel motor	3kw
液压电机/Hydraulic motor	3kw
电压/Voltage	60V (customizable)
电池/Battery	60V70AH*5 (customizable)
充电器/Charger	220V
前桥/Front axle	180 suspended cast steel front axle
轮胎/Tire	Front wheel 650-10/Rear wheel 500-8

产品优势/PRODUCT ADVANTAGES

1. The vehicle has a compact appearance, a small turning radius, and can work in narrow passages.
2. Light weight, energy-saving and convenient, and the control mechanism is flexible, reliable and safe.
3. Standard solid tires, stronger load-bearing capacity and life, and low maintenance costs.
4. Using batteries as the power source, pure power, no pollution, meeting national environmental protection requirements.
5. Equipped with advanced energy regeneration system, energy-saving and high efficiency, strong endurance.



Thickened tires



Operating system



Thickened door frame



Hydraulic Cylinder



Sturdy and thick chain



Safety overhead guard

CPD25 *Electric forklift*



型号/Model	CPD25
起升重量/Lifting weight	2500kg
总长/Total length	2400mm
总宽/Total width	1200mm
总高/Total height	2150mm
整车自重/Vehicle weight	2800kg
起升高度/Lifting height	3000mm
行走电机/Travel motor	5kw
液压电机/Hydraulic motor	3kw
电压/Voltage	60V (customizable)
电池/Battery	60V 140AH*10(customizable)
充电器/Charger	220V
前桥/Front axle	220 suspended cast steel front axle
轮胎/Tire	Front wheel 650-10/Rear wheel 500-8

产品优势/PRODUCT ADVANTAGES

1. Developed jointly with a well-known design company, the new design has a soft and elegant appearance without losing tension.
2. The covering parts are all one-piece metal stamping parts, which are beautiful, practical, firm and reliable.
3. The battery is used as the power source, which is pure power and pollution-free, meeting the national environmental protection requirements.
4. Equipped with an advanced energy regeneration system, it is energy-saving and efficient, and has a strong endurance.



Thickened forged front fork



Operating system



Thickened door frame



Hydraulic Cylinder



Comfortable seats



Safety warning tail light

CPD30 *Electric forklift*



型号/Model	CPD30
起升重量/Lifting weight	3000kg
总长/Total length	2600mm
总宽/Total width	1200mm
总高/Total height	2150mm
整车自重/Vehicle weight	3600kg
起升高度/Lifting height	3000mm
行走电机/Travel motor	5kw
液压电机/Hydraulic motor	5kw
电压/Voltage	60V (customizable)
电池/Battery	60V 140AH*10(customizable)
充电器/Charger	220V
前桥/Front axle	265 suspended cast steel front axle
轮胎/Tire	Front wheel 650-10/Rear wheel 500-8

产品优势/PRODUCT ADVANTAGES

1. The vehicle has a compact appearance, a small turning radius, and can work in narrow passages.
2. It has a light weight, is energy-saving and convenient, and the control mechanism is flexible, reliable and safe.
3. It is equipped with a large-capacity battery as standard, which has stronger power and longer endurance.
4. It uses batteries as the power source, which is pure power and pollution-free, meeting national environmental protection requirements.



Large capacity battery pack



Operating system



Thickened forged front fork



Hydraulic Cylinder



Emergency start-stop device



Safety warning tail light

CPD35 *Electric forklift*



型号/Model	CPD35
起升重量/Lifting weight	3500kg
总长/Total length	2700mm
总宽/Total width	1200mm
总高/Total height	2150mm
整车自重/Vehicle weight	3700kg
起升高度/Lifting height	3000mm
行走电机/Travel motor	7.5kw
液压电机/Hydraulic motor	5kw
电压/Voltage	60V (customizable)
电池/Battery	60V 200AH*10(customizable)
充电器/Charger	220V
前桥/Front axle	265 suspended cast steel front axle
轮胎/Tire	Front wheel 650-10/Rear wheel 500-8

产品优势/PRODUCT ADVANTAGES

1. The vehicle has a compact appearance and a small turning radius, and can work in narrow passages.
2. It is light in weight, energy-saving and convenient, and the control mechanism is flexible, reliable and safe.
3. It is equipped with solid tires as standard, with stronger load-bearing capacity and lifespan, and low maintenance costs.
4. It is equipped with an advanced energy regeneration system, which is energy-saving and efficient, and has a strong endurance.



Large capacity battery pack



Operating system



Thickened forged front fork



Hydraulic Cylinder



Emergency start-stop device



Safety warning tail light

CPD40 *Electric forklift*



型号/Model	CPD40
起升重量/Lifting weight	4000kg
总长/Total length	2700mm
总宽/Total width	1350mm
总高/Total height	2150mm
整车自重/Vehicle weight	4300kg
起升高度/Lifting height	3000mm
行走电机/Travel motor	10kw
液压电机/Hydraulic motor	7.5kw
电压/Voltage	60V (customizable)
电池/Battery	60V 200AH*10(customizable)
充电器/Charger	220V
前桥/Front axle	310 suspended cast steel front axle
轮胎/Tire	Front wheel 23*9-10/Rear wheel 18*7-8

产品优势/PRODUCT ADVANTAGES

1. The vehicle has a compact appearance, a small turning radius, and can work in narrow passages.
2. It has a light weight, is energy-saving and convenient, and the control mechanism is flexible, reliable and safe.
3. It is equipped with a large-capacity battery as standard, which has stronger power and longer endurance.
4. It uses batteries as the power source, which is pure power and pollution-free, meeting national environmental protection requirements.



Thickened tires



Operating system



Thickened door frame



Hydraulic Cylinder



Sturdy and thick chain



Safety overhead guard

CPD50 *Electric forklift*



型号/Model	CPD50
起升重量/Lifting weight	5000kg
总长/Total length	2900mm
总宽/Total width	1220mm
总高/Total height	2150mm
整车自重/Vehicle weight	5200kg
起升高度/Lifting height	3000mm
行走电机/Travel motor	16kw
液压电机/Hydraulic motor	13kw
电压/Voltage	80V (customizable)
电池/Battery	80V 300AH (customizable)
充电器/Charger	220V
前桥/Front axle	310 suspended cast steel front axle
轮胎/Tire	Front wheel 28x9-15/Rear wheel 650-10

产品优势/PRODUCT ADVANTAGES

1. The vehicle has a compact appearance, a small turning radius, and can work in narrow passages.
2. It has a light weight, is energy-saving and convenient, and the control mechanism is flexible, reliable and safe.
3. It is equipped with a large-capacity battery as standard, which has stronger power and longer endurance.
4. It uses batteries as the power source, which is pure power and pollution-free, meeting national environmental protection requirements.



Thickened tires



Stable mast



Thickened fork



Hydraulic Cylinder



Sturdy and thick chain



Comfortable seats

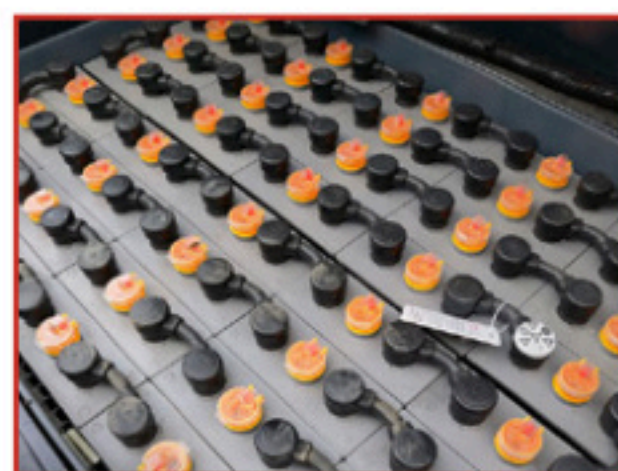
CPD70 *Electric forklift*



型号/Model	CPD70
起升高度/Lifting Height	3000mm
起重能力/Lifting Capacity	7000kg
总重量/Total weight	8700kg
总长度/Total length	3600mm
总宽度/Total width	1860mm
护顶架高度/Overhead guard height	2260mm
货叉尺寸/Fork size	50*150*1070mm
轴距/Wheelbase	2560mm
最小离地间隙/Minimum ground clearance	150mm
最小转弯半径/Minimum turning radius	2800mm
门架下降后高度/Mast height after lowering	2350mm
驱动电机/Drive motor	21.5kw
起升电机/Lifting motor	25.5kw

产品优势/PRODUCT ADVANTAGES

1. The vehicle has a compact appearance and a small turning radius, and can work in narrow passages.
2. It is light in weight, energy-saving and convenient, and the control mechanism is flexible, reliable and safe.
3. It is equipped with solid tires as standard, with stronger load-bearing capacity and lifespan, and low maintenance costs.
4. It is equipped with an advanced energy regeneration system, which is energy-saving and efficient, and has a strong endurance.



Battery



Operating system



Thickened tires



Stable chain



Heavy-duty axle



LED lighting



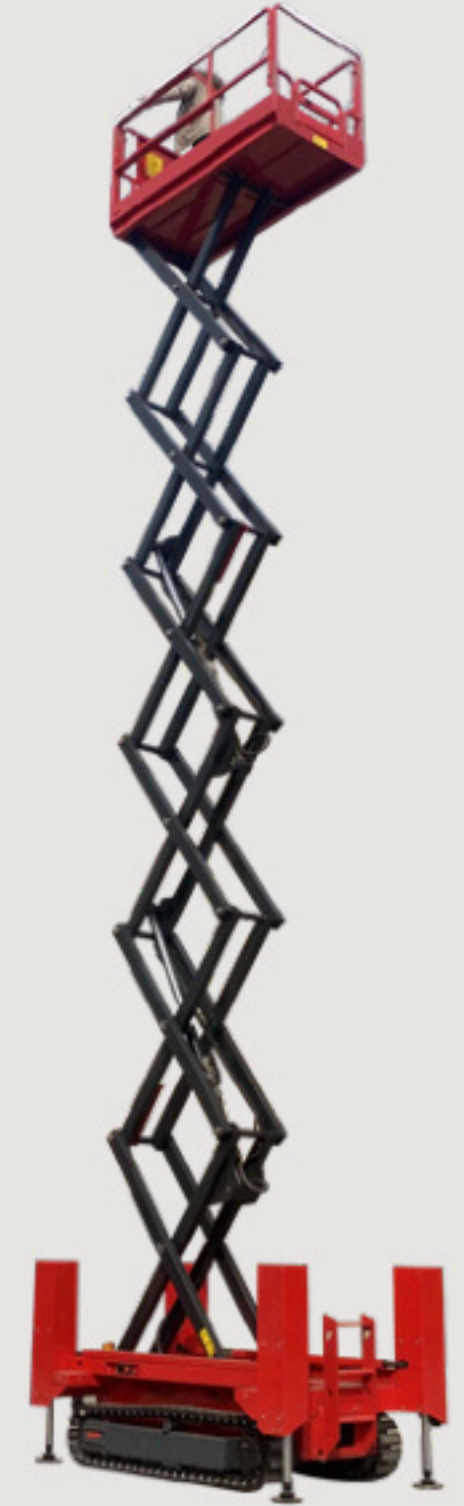
**MOBILE SCISSOR
LIFTING PLATFORM**



**MINI ELECTRIC
LIFTING PLATFORM**



**FULLY SELF-PROPELLED
HYDRAULIC
LIFTING PLATFORM**



**CRAWLER TYPE
LIFTING PLATFORM**

Mobile Scissor *Lifting platform*



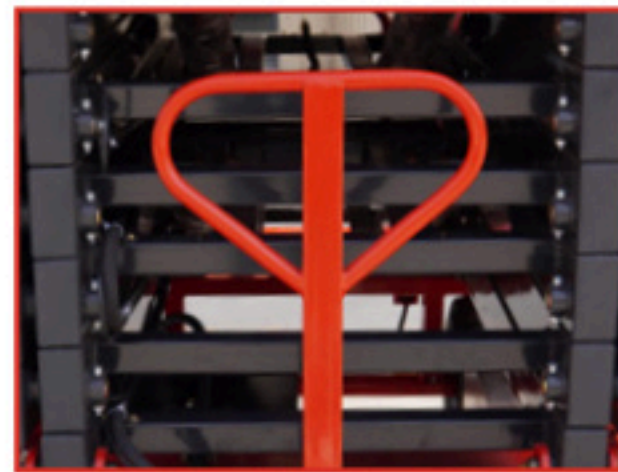
Model	Load (kg)	Weight (kg)	Lifting height (m)	Platform size (mm)	Dimensions (mm)
HT-0.5-4	500	670	4	2010*830	2016*1000*1120
HT-0.5-6	500	730	6	2010*830	2016*1000*1170
HT-0.5-6.8	500	780	6.8	2010*830	2016*1000*1170
HT-0.5-8	500	860	8	2010*830	2016*1000*1260
HT-0.5-9	500	1080	9	2010*830	2016*1000*1480
HT-0.5-10	500	1300	10	2010*1130	2016*1290*1540
HT-0.3-11	300	1400	11	2010*1130	2016*1290*1660
HT-0.5-12	500	2050	12	2500*1210	2500*1360*1780
HT-0.5-14	500	2540	14	2845*1420	2845*1620*1895
HT-0.3-16	300	2700	16	2845*1420	2845*1620*2055
HT-0.3-18	300	3900	18	3060*1620	3060*1800*2120
HT-1.0-6	1000	1130	6	2010*1130	2016*1290*1310
HT-1.0-8	1000	1380	8	2010*1130	2016*1290*1420
HT-1.0-10	1000	1580	10	2010*1130	2016*1290*1620
HT-1.0-12	1000	2400	12	2462*1210	2465*1360*1780
HT-1.0-14	1000	2800	14	2845*1420	2845*1620*1895

产品优势/PRODUCT ADVANTAGES

1. The lifting platform has strong controllability and simple self-scissor operation. It can also meet the needs of customers at different heights. It stops immediately after pressing, which promotes the rapid and smooth completion of high-altitude operations.
2. It can reduce noise during operation, increase the clearance inside the platform, and make the transmission more stable and the mechanism vibration smaller.
3. The whole machine is designed in an integrated manner, with a built-in battery power supply, which can meet the needs of customers in different working conditions.



Thickened tires



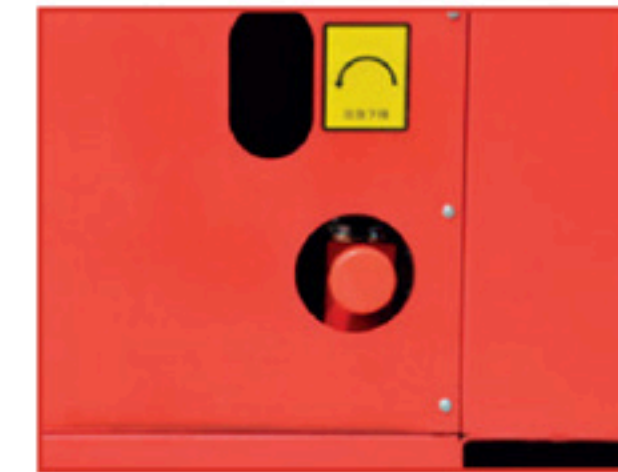
Control handle



Support leg



Control switch



Emergency lowering switch



Oil pipeline layout

Mini Electric *Lifting platform*



型号/Model	HTGTJZD-4	HTGTJZD-6
载重/Load	230kg	230kg
自重/Weight	860kg	1200kg
净升高度/Lifting height	4m	6m
台面尺寸/Platform size	1300*680mm	1680*780mm
外形尺寸/Dimensions	1440*700*1860mm	1820*780*2020mm

产品优势 / PRODUCT ADVANTAGES

1. The lifting platform has strong controllability and simple self-scissor operation. It can also meet the needs of customers at different heights. It stops immediately after pressing, which promotes the rapid and smooth completion of high-altitude operations.
2. It can reduce noise during operation, increase the clearance inside the platform, and make the transmission more stable and the mechanism vibration smaller.
3. The whole machine is designed in an integrated manner, with a built-in battery power supply, which can meet the needs of customers in different working conditions.



Silent non-marking tires



Platform ladder



Battery



Control buttons



Extended platform



One-click leveling of support legs

Fully Self-propelled Hydraulic *Lifting platform*



Model	Load	Weight	Lifting height	Platform size	Dimensions
HTGTJZ-6	450kg	2100kg	6m	2270*1130mm	2390*1160*2210mm
HTGTJZ-8	450kg	2250kg	8m	2270*1130mm	2390*1160*2340mm
HTGTJZ-8(Small)	450kg	2050kg	8m	2270*810mm	2390*840*1820mm
HTGTJZ-10	320kg	2550kg	10m	2270*1130mm	2390*1160*2470mm
HTGTJZ-12	320kg	2950kg	12m	2270*1130mm	2390*1160*2600mm
HTGTJZ-14	227kg	3300kg	14m	2630*1130mm	2790*1400*2600mm

产品优势 / PRODUCT ADVANTAGES

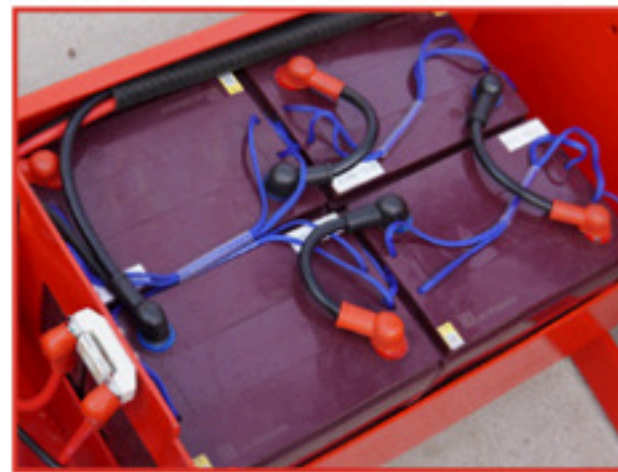
1. The lifting platform has strong controllability and simple self-scissor operation. It can also meet the needs of customers at different heights. It stops immediately after pressing, which promotes the rapid and smooth completion of high-altitude operations.
2. It can reduce noise during operation, increase the clearance inside the platform, and make the transmission more stable and the mechanism vibration smaller.
3. The whole machine is designed in an integrated manner, with a built-in battery power supply, which can meet the needs of customers in different working conditions.



Silent non-marking tires



Platform ladder



Battery



Control buttons



Extended platform



One-click leveling of support legs

Crawler type *Lifting platform*



Model	Load	Weight	Lifting height	Platform size	Dimensions
HTPT06	450kg	2770kg	6m	2270*1130mm	2780*1570*2350mm
HTPT08	450kg	2970kg	8m	2270*1130mm	2780*1570*2470mm
HTPT10	320kg	3270kg	10m	2270*1130mm	2780*1570*2640mm
HTPT12	320kg	3680kg	12m	2270*1130mm	2780*1570*2740mm
HTPT14	220kg	3990kg	14m	2630*1130mm	3200*1650*2770mm

产品优势 / PRODUCT ADVANTAGES

1. The lifting platform has strong controllability and simple self-scissor operation. It can also meet the needs of customers at different heights. It stops immediately after pressing, which promotes the rapid and smooth completion of high-altitude operations.
2. It can reduce noise during operation, increase the clearance inside the platform, and make the transmission more stable and the mechanism vibration smaller.
3. The whole machine is designed in an integrated manner, with a built-in battery power supply, which can meet the needs of customers in different working conditions.



Steel tracks



Power unit



Scissor legs



Control buttons



Platform ladder



One-click leveling of support legs

STACKER TRUCK



MANUAL TRUCK



ELECTRIC TRUCK



MANUAL STACKER



WALKING STACKER



STAND-ON STACKER



FORWARD-MOVING STACKER



SELF-LIFTING STACKER



SEMI-ELECTRIC STACKER

> HOT DEALS

Manual Truck



型号/Model	Manual truck
举升能力/Lifting Capacity	2000/3000/5000kg
货叉最小高度/Minimum Height of Fork	85mm
最大举升行程/Maximum Lifting Stroke	115mm
货叉外宽/Fork Outer Width	550/685mm
货叉内宽/Fork Inner Width	230/365mm
总长/Overall Length	1500/1570mm
总宽/Overall width	550/685mm
总高/Overall Height	1230mm
转弯半径/Turning Radius	1266/1336mm
方向盘尺寸/Steering Wheel Size	Φ180×50mm
单叉宽度/Single Fork Width	160mm

- 产品优势/PRODUCT ADVANTAGES**
1. The vehicle has a small body and light weight, and can work in narrow passages and enter the elevator fully loaded.
 2. The fork leg is reinforced, with high overall strength and not easy to deform.
 3. The vehicle has regenerative braking and slope anti-slip protection to ensure safe operation.
 4. The integrated cover is easy to disassemble and install, and easy to maintain.
 5. The gantry adopts H-shaped channel steel, which has strong stability and good rigidity.



Operating handle



Tires



Integrated casting pump



Thickened fork



Forks can be raised 15 cm



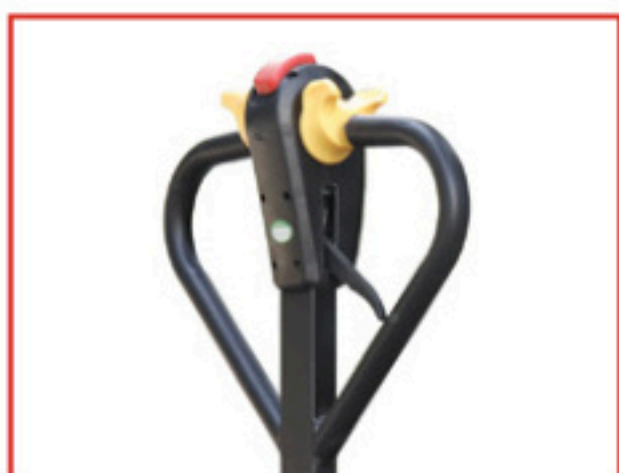
Customizable colors

Semi-Electric Truck



型号/Model	Semi-electric truck
载重/Load	3T
操作类型/Operation type	Semi electric
车身自重/Body weight	160kg
电机功率/Motor Power	1500w
控制器电流/Controller current	35A
电池电压/容量/Battery voltage/capacity	48v20A lead acid
载重轮型号/Load wheel model	170-55Polyurethane
后轮型号/Rear wheel model	80-70 polyurethane
货叉离地高度/Fork height from ground	80-200mm
货叉间距/Fork distance	685/550mm
货叉宽度/Fork width	160mm
货叉有效长度/Effective length of fork	1200mm
整车全长含手柄/Full length of vehicle including handle	1700mm
最小转弯半径/Minimum turning radius	1.6mm
爬坡度满载/空载/Gradeability full/unloaded	15/30%
整车尺寸/Vehicle size	170*68.5*120cm
整车重量/Vehicle weight	150kg-195kg

- 产品优势/PRODUCT ADVANTAGES
1. The vehicle has a small body and light weight, and can work in narrow passages and enter the elevator fully loaded.
 2. The fork leg is reinforced, with high overall strength and not easy to deform.
 3. The vehicle has regenerative braking and slope anti-slip protection to ensure safe operation.
 4. The integrated cover is easy to disassemble and install, and easy to maintain.
 5. The gantry adopts H-shaped channel steel, which has strong stability and good rigidity.



Operating handle



Drive tires



Integrated casting pump



Thickened fork



One-button switch



Can be lifted up to 20cm

Fully Electric Truck



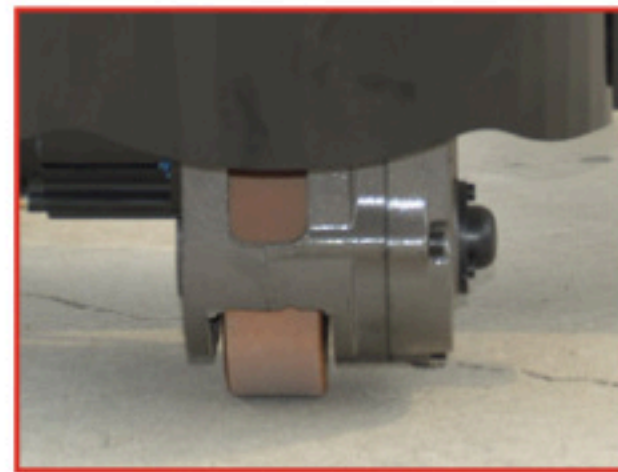
型号/Model	Fully electric truck
载重/Load	3T
操作类型/Operation type	Fully electric
车身自重/Body weight	175kg
电机功率/Motor Power	1500w
控制器电流/Controller current	45A
电池电压/容量/Battery voltage/capacity	48v32A lead acid
载重轮型号/Load wheel model	170-55Polyurethane
后轮型号/Rear wheel model	80-70 polyurethane
货叉离地高度/Fork height from ground	80-200mm
货叉间距/Fork distance	685/550mm
货叉宽度/Fork width	160mm
货叉有效长度/Effective length of fork	1200mm
整车全长含手柄/Full length of vehicle including handle	1700mm
最小转弯半径/Minimum turning radius	1.6m
爬坡度满载/空载/Gradeability full/unloaded	15/30%
整车尺寸/Vehicle size	170*68.5*120cm
整车重量/Vehicle weight	150kg-195kg

产品优势/PRODUCT ADVANTAGES

1. The vehicle has a small body and light weight, and can work in narrow passages and enter the elevator fully loaded.
2. The fork leg is reinforced, with high overall strength and not easy to deform.
3. The vehicle has regenerative braking and slope anti-slip protection to ensure safe operation.
4. The integrated cover is easy to disassemble and install, and easy to maintain.
5. The gantry adopts H-shaped channel steel, which has strong stability and good rigidity.



Operating handle



Drive tires



Hydraulic Cylinder



Thickened fork



Stable body



One-button start and stop

Manual Stacker



型号/Model	Manual stacker
负载能力/Load capacity	1000/1500/2000/3000kg
举升高度/Lifting Height	1600mm
总宽度/Overall Width	745mm
货叉长度/Length Of Fork	800/850mm
单叉宽度/Width of Single Fork	100/120mm
货叉内宽/Inner Width of Fork	58mm
支腿宽度/Width of Legs	70mm
最小高度/Min Height	85mm
把手高度/Height of Handle	1100mm
转向轮/Steering Wheel	180*50mm
承重轮/Load Wheel	90*50
车轮材质/Wheel Material	Nylon
自重高度/Self Height	2000mm
可调货叉宽度/Adjustable Fork Width	210-560mm

- 产品优势/PRODUCT ADVANTAGES
1. The vehicle has a small body and light weight, and can work in narrow passages and enter the elevator fully loaded.
 2. The fork leg is reinforced, with high overall strength and not easy to deform.
 3. The vehicle has regenerative braking and slope anti-slip protection to ensure safe operation.
 4. The integrated cover is easy to disassemble and install, and easy to maintain.
 5. The gantry adopts H-shaped channel steel, which has strong stability and good rigidity.



Operating handle



Tires



Foot board



Thickened fork



Hydraulic Cylinder



Armrest

Walking Stacker



型号/Model	Walking Stacker
举升高度/Lifting Height	1600/2000/2500/3000mm
标准举升高度/Standard Lifting Height	3000mm
总长/Total Length	1800mm
总重量/Total Weight	620kg
总高/Total Height	2000/1600/1850/2100mm
总宽/Total Width	852mm
举升电机/Lifting Motor	2.2kw
驱动电机/Driving Motor	0.75kw
最小转弯半径/Min Turning Radius	1350mm
电池容量/Battery Capacity	24V/80ah
举升能力/Lifting Capacity	1500kg

产品优势/PRODUCT ADVANTAGES

1. The vehicle has a small body and light weight, and can work in narrow passages and enter the elevator fully loaded.
2. The fork leg is reinforced, with high overall strength and not easy to deform.
3. The vehicle has regenerative braking and slope anti-slip protection to ensure safe operation.
4. The integrated cover is easy to disassemble and install, and easy to maintain.
5. The gantry adopts H-shaped channel steel, which has strong stability and good rigidity.



Smart handle



Forks



Door frame



Hydraulic Cylinder



Thickened chain



Power switch

Stand-on Stacker



型号/Model	Stand-on Stacker
举升高度/Lifting Height	1600/2000/2500/3000/3500mm
标准举升高度/Standard Lifting Height	3000mm
总长/Total Length	2023mm
总重量/Total Weight	730kg
总高/Total Height	2080/1580/1830/2080/2330mm
总宽/Total Width	852mm
举升电机/Lifting Motor	2.2kw
驱动电机/Driving Motor	0.75kw
最小转弯半径/Min Turning Radius	1619mm
电池容量/Battery Capacity	2*12v/120ah
举升能力/Lifting Capacity	1500kg

- 产品优势/PRODUCT ADVANTAGES
1. The vehicle has a small body and light weight, and can work in narrow passages and enter the elevator fully loaded.
 2. The fork leg is reinforced, with high overall strength and not easy to deform.
 3. The vehicle has regenerative braking and slope anti-slip protection to ensure safe operation.
 4. The integrated cover is easy to disassemble and install, and easy to maintain.
 5. The gantry adopts H-shaped channel steel, which has strong stability and good rigidity.



Smart handle



Forks



Door frame



Foot pedal



Thickened chain



Power switch

Forward-Moving Stacker



型号/Model	Forward-moving stacker
举升高度/Lifting Height	1600/2000/3000/4000/5000mm
标准举升高度/Standard Lifting Height	3000mm
总长/Total Length	3200
总重量/Total Weight	1600kg
总高/Total Height	2080/1580/1830/2080/2330mm
总宽/Total Width	1050mm
举升电机/Lifting Motor	2.2kw
驱动电机/Driving Motor	1.5kw
最小转弯半径/Min Turning Radius	2200mm
电池容量/Battery Capacity	24V/210Ah
举升能力/Lifting Capacity	1000/1500/2000kg

- 产品优势/PRODUCT ADVANTAGES
1. The vehicle has a small body and light weight, and can work in narrow passages and enter the elevator fully loaded.
 2. The fork leg is reinforced, with high overall strength and not easy to deform.
 3. The vehicle has regenerative braking and slope anti-slip protection to ensure safe operation.
 4. The integrated cover is easy to disassemble and install, and easy to maintain.
 5. The gantry adopts H-shaped channel steel, which has strong stability and good rigidity.



Smart handle



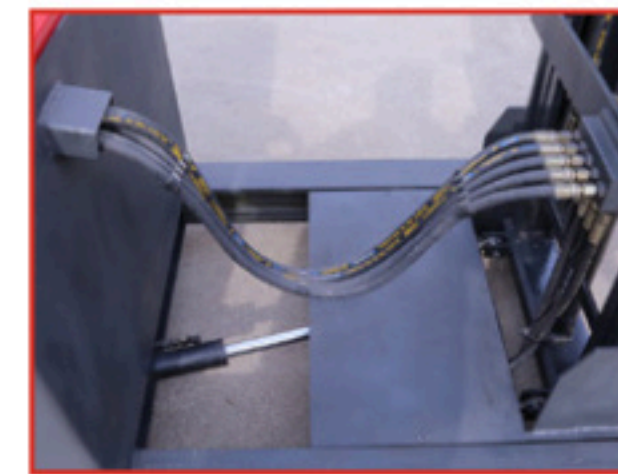
Forks



Door frame



Foot pedal



Forward moving device



Joystick

Self-Lifting Stacker



型号/Model	Fully electric truck
额定载重量/Rated load	500kg
货叉外距/Fork outer spacing	Fully electric
货叉长度/Fork length	1195mm
货叉举升高度/Fork lifting height	800/900/1000/1100/1200/1300mm
轴距/Wheelbase	960mm
整车长度/Full length of vehicle	1676mm
车身厚度/Body thickness	409mm
车身宽度/Body width	685mm
前轮距/Front track	409/529mm
货叉宽度/Fork width	195mm/253mm
最小转弯半径/Minimum turning radius	1147mm/1173mm
电机/Motor	DC 0.6kW
举升电机/Lift motor	DC 0.8kW/2.2kw
电池电压/Battery voltage	48v (Lithium battery)
电池容量/Battery capacity	15ah
电池重量/Battery weight	5kg
自重(含电池)/Self-weight (including battery)	330kg/382kg

产品优势/PRODUCT ADVANTAGES

1. The vehicle has a small body and light weight, and can work in narrow passages and enter the elevator fully loaded.
2. The fork leg is reinforced, with high overall strength and not easy to deform.
3. The vehicle has regenerative braking and slope anti-slip protection to ensure safe operation.
4. The integrated cover is easy to disassemble and install, and easy to maintain.
5. The gantry adopts H-shaped channel steel, which has strong stability and good rigidity.



Smart handle



Forks



Start-Stop Switch



Hydraulic Cylinder



Stable body



Tire

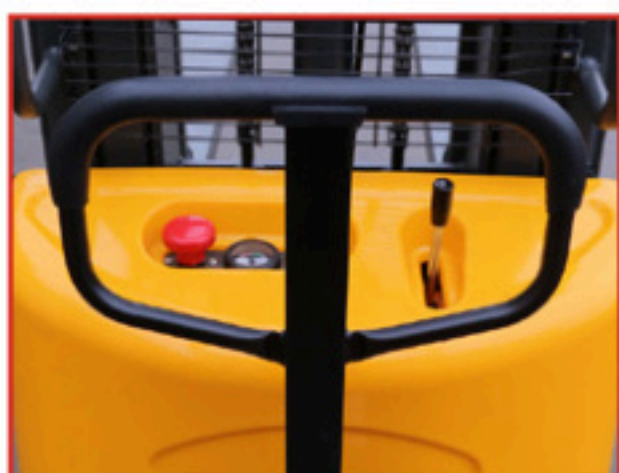
Semi-Electric Stacker



型号/Model	Semi-electric stacker
起重能力/Lifting Capacity	1000/1500/2000kg
起升高度/Lifting Height	1600/2000/2500/3000/3500mm
总长度/Total Length	1580mm
总宽度/Total Width	800mm
总高度/Total Height	2080-2350mm
起升电机/Lifting Motor	1.6kw
离地间隙/Ground clearance	26mm
最小转弯半径/Min Turning Radius	1400mm
电池容量/Battery Capacity	12v/120ah
货叉长度/Fork length	1000mm
货叉宽度/Fork width	160mm

产品优势/PRODUCT ADVANTAGES

1. The vehicle has a small body and light weight, and can work in narrow passages and enter the elevator fully loaded.
2. The fork leg is reinforced, with high overall strength and not easy to deform.
3. The vehicle has regenerative braking and slope anti-slip protection to ensure safe operation.
4. The integrated cover is easy to disassemble and install, and easy to maintain.
5. The gantry adopts H-shaped channel steel, which has strong stability and good rigidity.



Smart handle



Forks



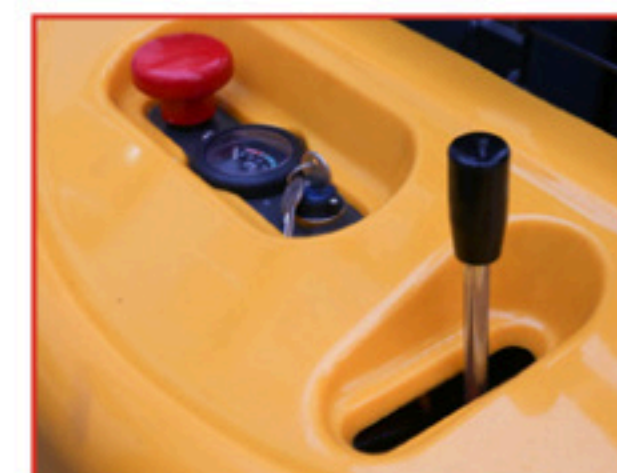
Door frame



Hydraulic Cylinder



Thickened chain



Power switch



CQD
REACH TRUCK



CQDJ
SCISSOR REACH FORKLIFT



CSD
THREE-WAY FORKLIFT

CQD Reach truck



型号/Model	CQD16-25
额定载重/Rated load	1600-2500kg
最大起升高度/Maximum lifting height	6000mm
货叉尺寸/Fork size	35*100*1070mm/40*122*1070mm
全长/Total length	2440mm
全宽/Total width	1260/1270mm
门架闭合高度/Mast closed height	3345mm
货叉起升时最大高度/Maximum height when fork is lifted	8515mm
自由提升高度/Free lifting height	2535mm
转弯半径/Turning radius	1805mm
护顶架高度/Height of overhead guard	2270mm
总重/Total weight	3320/3500kg
蓄电池电压/容量/Battery voltage/capacity	48v/300-420ah
起升马达/Lifting motor	AC 6.3-8.6KW
驱动马达/Drive motor	AC 4.5-6.5KW

产品优势/PRODUCT ADVANTAGES

1. American CURTIS brand AC control system
2. Stepless speed regulation
3. Japanese Shimadzu brand hydraulic lifting oil pump
4. 48V/400AH lead-acid battery;
5. 48V/50A external intelligent charger,
6. Vehicle seals are made of Japanese NOK
7. High wear-resistant polyurethane wheels
(load-bearing wheels, drive wheels)
8. Forklift special mast channel steel
9. Multi-function instrument



CQDJ Scissor reach forklift



型号/Model	CQD16J
额定载重/Rated load	1600kg
最大起升高度/Maximum lifting height	6000mm
货叉尺寸/Fork size	1070/122/40mm
全长/Total length	2705mm
全宽/Total width	1270/1520mm
门架闭合高度/Mast closed height	2980mm
货叉起升时最大高度/Maximum height when fork is lifted	6970mm
自由提升高度/Free lifting height	2050mm
转弯半径/Turning radius	1950mm
护顶架高度/Height of overhead guard	2190mm
总重/Total weight	4150kg
蓄电池电压/容量/Battery voltage/capacity	48v/400ah
起升马达/Lifting motor	AC 8.6KW
驱动马达/Drive motor	AC 6.5KW

- 产品优势/PRODUCT ADVANTAGES
1. American CURTIS brand AC control system
 2. Stepless speed regulation
 3. Japanese Shimadzu brand hydraulic lifting oil pump
 4. 48V/400AH lead-acid battery;
 5. 48V/50A external intelligent charger,
 6. Vehicle seals are made of Japanese NOK
 7. High wear-resistant polyurethane wheels (load-bearing wheels, drive wheels)
 8. Forklift special mast channel steel
 9. Multi-function instrument



CSD Three-Way Forklift



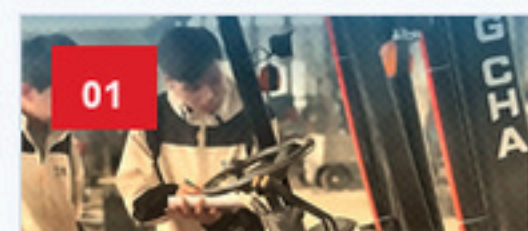
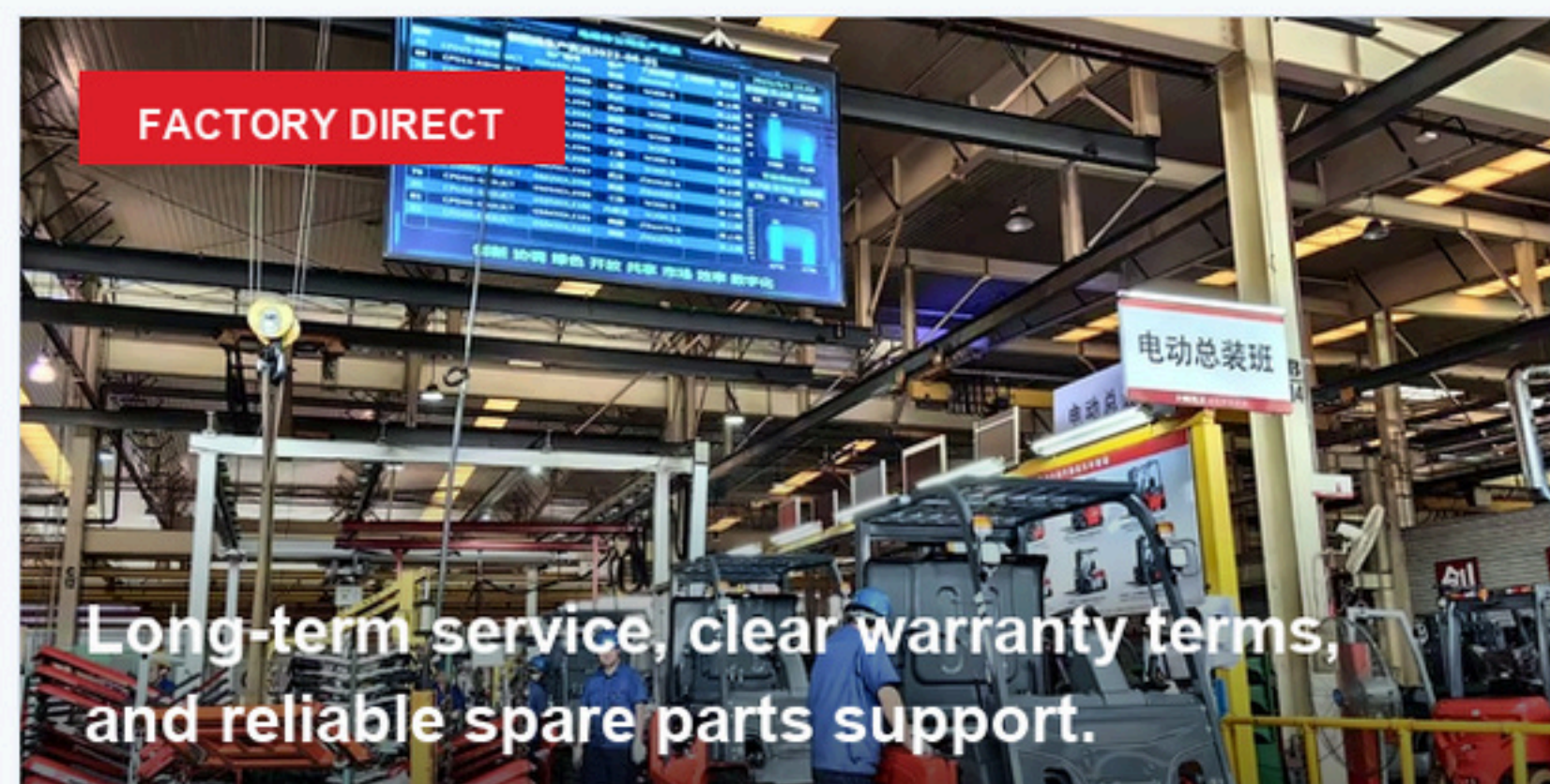
型号/Model	CSD15
额定载重/Rated load	1500kg
最大起升高度/Maximum lifting height	9000mm
货叉尺寸/Fork size	45/125/1200mm
全长/Total length	3030mm
全宽/Total width	1575mm
门架闭合高度/Mast closed height	4310mm
货叉起升时最大高度/Maximum height when fork is lifted	10160mm
自由提升高度/Free lifting height	3115mm
转弯半径/Turning radius	1990mm
护顶架高度/Height of overhead guard	2190mm
总重/Total weight	7300kg
蓄电池电压/容量/Battery voltage/capacity	48v/420ah
起升马达/Lifting motor	AC 8.6KW
驱动马达/Drive motor	AC 6.5KW

产品优势/PRODUCT ADVANTAGES
1. American CURTIS brand AC control system
2. Stepless speed regulation
3. Japanese Shimadzu brand hydraulic lifting oil pump
4. 48V/400AH lead-acid battery;
5. 48V/50A external intelligent charger,
6. Vehicle seals are made of Japanese NOK
7. High wear-resistant polyurethane wheels (load-bearing wheels, drive wheels)
8. Forklift special mast channel steel
9. Multi-function instrument



QUALITY & SERVICE SUPPORT

Factory direct supply, controlled quality, reliable delivery and strong after-sales commitment.



01 Quality Inspection

Machines are tested before delivery.



02 Packing & Delivery

Export packing and spare parts package.



03 Factory Direct

Stable production and direct communication.

AFTER-SALES SERVICE

48-MONTH WARRANTY

Clear warranty, fast response, spare parts support and local service coordination help customers use our machines with confidence.

- 1 **48-month warranty** Whole machine warranty, including battery, motor and electric control system.
- 2 **Free parts by express** Non-human quality problems receive free replacement parts by express.
- 3 **20+ partner markets** Cooperative after-sales partners support covered countries and regions.
- 4 **Repair cost support** If no local partner is available, customers may find a local technician and we will bear reasonable repair costs.
- 5 **7x24 remote support** Operation, maintenance, troubleshooting and parts replacement guidance.
- 6 **48-hour response** Feedback is responded to within 48 hours; third-party on-site service can be coordinated when necessary.
- 7 **PI & contract terms** All after-sales terms can be clearly confirmed before order and written into PI and contract.



TRUSTED BY GLOBAL CUSTOMERS

Customer trust comes from real visits, repeat orders and stable demand.

High Sales Volume
Popular Models

Repeat Orders
Stable Demand

Customer Visits
Real Cooperation

Dealer Cooperation
Overseas Partners

CONTACT US

DAVID



WHATSAPP

+86 15705410172

EMAIL

david@litolon8.com

WEBSITE

www.litolon8.com

ADDRESS

Jinan High-tech Industrial Development Zone, Shandong, China