
LITELON

PRODUCT CATALOG

Electric Material Handling Equipment

Professional Manufacturer Since 2008



Factory Direct Sales · Quality Assurance · Customization Available · Global Delivery
Electric Forklift | Scissor Lift | Pallet Truck | Stacker | Reach Truck

COMPANY PROFILE

Factory Direct Manufacturer Since 2008

LITELON is a factory-direct manufacturer specializing in electric material handling equipment for warehouses, factories, logistics parks and industrial working sites.

Our product range covers electric forklifts, pallet trucks, stackers, scissor lift platforms, reach trucks and narrow-aisle forklifts.

With 400 employees and 30 R&D personnel, we integrate product development, production assembly, quality inspection and after-sales service.

We provide competitive purchasing costs, flexible customization, controlled delivery and long-term spare parts support for customers worldwide.

FACTORY & PRODUCT DISPLAY



CERTIFICATIONS



2008
Founded

18
Years Experience

400
Employees

30
R&D Personnel

160+
Patents & Certifications

3000+
Customers Served

50+
Countries & Regions

ELECTRIC FORKLIFT



CPD15
ELECTRIC FORKLIFT



CPD20
ELECTRIC FORKLIFT



CPD25
ELECTRIC FORKLIFT



CPD30
ELECTRIC FORKLIFT



CPD35
ELECTRIC FORKLIFT



CPD40
ELECTRIC FORKLIFT



CPD50
ELECTRIC FORKLIFT



CPD70
ELECTRIC FORKLIFT

> HOT DEALS

CPD15 *Electric forklift*



型号/Model	CPD15
起升重量/Lifting weight	1500kg
总长/Total length	2300mm
总宽/Total width	1200mm
总高/Total height	2150mm
整车自重/Vehicle weight	2340kg
起升高度/Lifting height	3000mm
行走电机/Travel motor	3kw
液压电机/Hydraulic motor	3kw
电压/Voltage	60V (customizable)
电池/Battery	60V70AH*5 (customizable)
充电器/Charger	220V
前桥/Front axle	180 suspended cast steel front axle
轮胎/Tire	Front wheel 650-10/Rear wheel 500-8

产品优势/PRODUCT ADVANTAGES

1. The vehicle has a compact appearance, a small turning radius, and can work in narrow passages.
2. Light weight, energy-saving and convenient, and the control mechanism is flexible, reliable and safe.
3. Standard solid tires, stronger load-bearing capacity and life, and low maintenance costs.
4. Using batteries as the power source, pure power, no pollution, meeting national environmental protection requirements.
5. Equipped with advanced energy regeneration system, energy-saving and high efficiency, strong endurance.



Thickened forged front fork



Operating system



Thickened door frame



Hydraulic Cylinder



Comfortable seats



Safety warning tail light

CPD20 *Electric forklift*



型号/Model	CPD20
起升重量/Lifting weight	2000kg
总长/Total length	2300mm
总宽/Total width	1200mm
总高/Total height	2150mm
整车自重/Vehicle weight	2340kg
起升高度/Lifting height	3000mm
行走电机/Travel motor	3kw
液压电机/Hydraulic motor	3kw
电压/Voltage	60V (customizable)
电池/Battery	60V70AH*5 (customizable)
充电器/Charger	220V
前桥/Front axle	180 suspended cast steel front axle
轮胎/Tire	Front wheel 650-10/Rear wheel 500-8

产品优势/PRODUCT ADVANTAGES

1. The vehicle has a compact appearance, a small turning radius, and can work in narrow passages.
2. Light weight, energy-saving and convenient, and the control mechanism is flexible, reliable and safe.
3. Standard solid tires, stronger load-bearing capacity and life, and low maintenance costs.
4. Using batteries as the power source, pure power, no pollution, meeting national environmental protection requirements.
5. Equipped with advanced energy regeneration system, energy-saving and high efficiency, strong endurance.



Thickened tires



Operating system



Thickened door frame



Hydraulic Cylinder



Sturdy and thick chain



Safety overhead guard

CPD25 *Electric forklift*



型号/Model	CPD25
起升重量/Lifting weight	2500kg
总长/Total length	2400mm
总宽/Total width	1200mm
总高/Total height	2150mm
整车自重/Vehicle weight	2800kg
起升高度/Lifting height	3000mm
行走电机/Travel motor	5kw
液压电机/Hydraulic motor	3kw
电压/Voltage	60V (customizable)
电池/Battery	60V 140AH*10(customizable)
充电器/Charger	220V
前桥/Front axle	220 suspended cast steel front axle
轮胎/Tire	Front wheel 650-10/Rear wheel 500-8

产品优势/PRODUCT ADVANTAGES

1. Developed jointly with a well-known design company, the new design has a soft and elegant appearance without losing tension.
2. The covering parts are all one-piece metal stamping parts, which are beautiful, practical, firm and reliable.
3. The battery is used as the power source, which is pure power and pollution-free, meeting the national environmental protection requirements.
4. Equipped with an advanced energy regeneration system, it is energy-saving and efficient, and has a strong endurance.



Thickened forged front fork



Operating system



Thickened door frame



Hydraulic Cylinder



Comfortable seats



Safety warning tail light

CPD30 *Electric forklift*



型号/Model	CPD30
起升重量/Lifting weight	3000kg
总长/Total length	2600mm
总宽/Total width	1200mm
总高/Total height	2150mm
整车自重/Vehicle weight	3600kg
起升高度/Lifting height	3000mm
行走电机/Travel motor	5kw
液压电机/Hydraulic motor	5kw
电压/Voltage	60V (customizable)
电池/Battery	60V 140AH*10(customizable)
充电器/Charger	220V
前桥/Front axle	265 suspended cast steel front axle
轮胎/Tire	Front wheel 650-10/Rear wheel 500-8

产品优势/PRODUCT ADVANTAGES

1. The vehicle has a compact appearance, a small turning radius, and can work in narrow passages.
2. It has a light weight, is energy-saving and convenient, and the control mechanism is flexible, reliable and safe.
3. It is equipped with a large-capacity battery as standard, which has stronger power and longer endurance.
4. It uses batteries as the power source, which is pure power and pollution-free, meeting national environmental protection requirements.



Large capacity battery pack



Operating system



Thickened forged front fork



Hydraulic Cylinder



Emergency start-stop device



Safety warning tail light

CPD35 *Electric forklift*



型号/Model	CPD35
起升重量/Lifting weight	3500kg
总长/Total length	2700mm
总宽/Total width	1200mm
总高/Total height	2150mm
整车自重/Vehicle weight	3700kg
起升高度/Lifting height	3000mm
行走电机/Travel motor	7.5kw
液压电机/Hydraulic motor	5kw
电压/Voltage	60V (customizable)
电池/Battery	60V 200AH*10(customizable)
充电器/Charger	220V
前桥/Front axle	265 suspended cast steel front axle
轮胎/Tire	Front wheel 650-10/Rear wheel 500-8

产品优势 / PRODUCT ADVANTAGES

1. The vehicle has a compact appearance and a small turning radius, and can work in narrow passages.
2. It is light in weight, energy-saving and convenient, and the control mechanism is flexible, reliable and safe.
3. It is equipped with solid tires as standard, with stronger load-bearing capacity and lifespan, and low maintenance costs.
4. It is equipped with an advanced energy regeneration system, which is energy-saving and efficient, and has a strong endurance.



Large capacity battery pack



Operating system



Thickened forged front fork



Hydraulic Cylinder



Emergency start-stop device



Safety warning tail light

CPD40 *Electric forklift*



型号/Model	CPD40
起升重量/Lifting weight	4000kg
总长/Total length	2700mm
总宽/Total width	1350mm
总高/Total height	2150mm
整车自重/Vehicle weight	4300kg
起升高度/Lifting height	3000mm
行走电机/Travel motor	10kw
液压电机/Hydraulic motor	7.5kw
电压/Voltage	60V (customizable)
电池/Battery	60V 200AH*10(customizable)
充电器/Charger	220V
前桥/Front axle	310 suspended cast steel front axle
轮胎/Tire	Front wheel 23*9-10/Rear wheel 18*7-8

产品优势/PRODUCT ADVANTAGES

1. The vehicle has a compact appearance, a small turning radius, and can work in narrow passages.
2. It has a light weight, is energy-saving and convenient, and the control mechanism is flexible, reliable and safe.
3. It is equipped with a large-capacity battery as standard, which has stronger power and longer endurance.
4. It uses batteries as the power source, which is pure power and pollution-free, meeting national environmental protection requirements.



Thickened tires



Operating system



Thickened door frame



Hydraulic Cylinder



Sturdy and thick chain



Safety overhead guard

CPD50 *Electric forklift*



型号/Model	CPD50
起升重量/Lifting weight	5000kg
总长/Total length	2900mm
总宽/Total width	1220mm
总高/Total height	2150mm
整车自重/Vehicle weight	5200kg
起升高度/Lifting height	3000mm
行走电机/Travel motor	16kw
液压电机/Hydraulic motor	13kw
电压/Voltage	80V (customizable)
电池/Battery	80V 300AH (customizable)
充电器/Charger	220V
前桥/Front axle	310 suspended cast steel front axle
轮胎/Tire	Front wheel 28x9-15/Rear wheel 650-10

产品优势/PRODUCT ADVANTAGES

1. The vehicle has a compact appearance, a small turning radius, and can work in narrow passages.
2. It has a light weight, is energy-saving and convenient, and the control mechanism is flexible, reliable and safe.
3. It is equipped with a large-capacity battery as standard, which has stronger power and longer endurance.
4. It uses batteries as the power source, which is pure power and pollution-free, meeting national environmental protection requirements.



Thickened tires



Stable mast



Thickened fork



Hydraulic Cylinder



Sturdy and thick chain



Comfortable seats

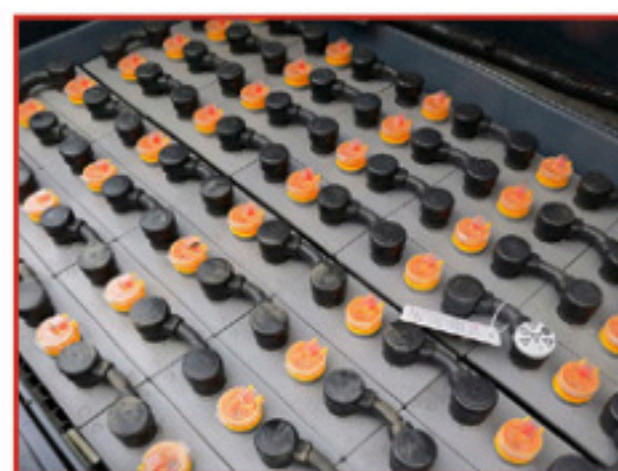
CPD70 *Electric forklift*



型号/Model	CPD70
起升高度/Lifting Height	3000mm
起重能力/Lifting Capacity	7000kg
总重量/Total weight	8700kg
总长度/Total length	3600mm
总宽度/Total width	1860mm
护顶架高度/Overhead guard height	2260mm
货叉尺寸/Fork size	50*150*1070mm
轴距/Wheelbase	2560mm
最小离地间隙/Minimum ground clearance	150mm
最小转弯半径/Minimum turning radius	2800mm
门架下降后高度/Mast height after lowering	2350mm
驱动电机/Drive motor	21.5kw
起升电机/Lifting motor	25.5kw

产品优势/PRODUCT ADVANTAGES

1. The vehicle has a compact appearance and a small turning radius, and can work in narrow passages.
2. It is light in weight, energy-saving and convenient, and the control mechanism is flexible, reliable and safe.
3. It is equipped with solid tires as standard, with stronger load-bearing capacity and lifespan, and low maintenance costs.
4. It is equipped with an advanced energy regeneration system, which is energy-saving and efficient, and has a strong endurance.



Battery



Operating system



Thickened tires



Stable chain



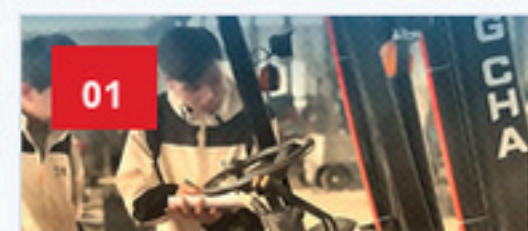
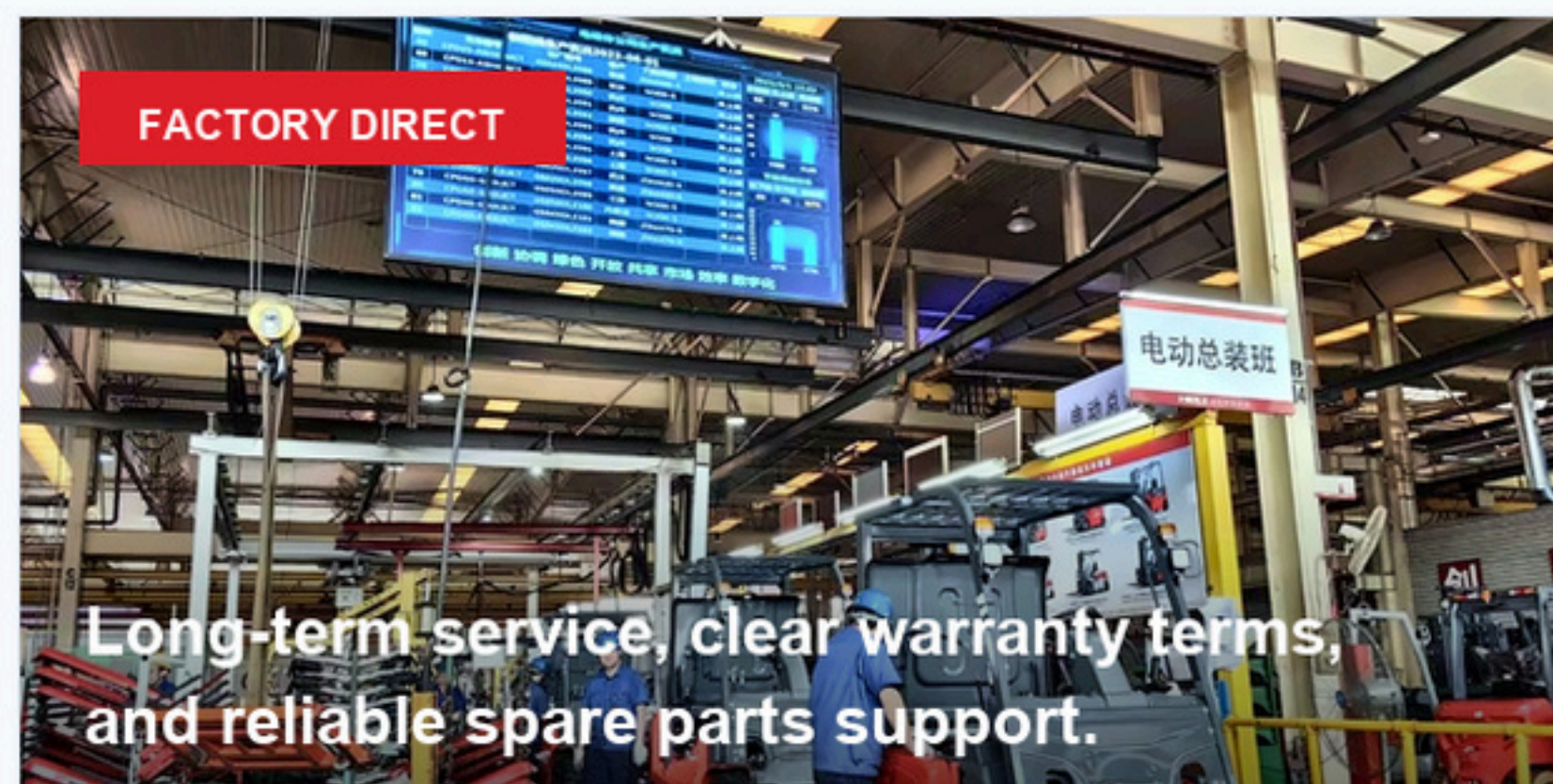
Heavy-duty axle



LED lighting

QUALITY & SERVICE SUPPORT

Factory direct supply, controlled quality, reliable delivery and strong after-sales commitment.



01 Quality Inspection

Machines are tested before delivery.



02 Packing & Delivery

Export packing and spare parts package.



03 Factory Direct

Stable production and direct communication.

AFTER-SALES SERVICE

48-MONTH WARRANTY

Clear warranty, fast response, spare parts support and local service coordination help customers use our machines with confidence.

- 1 **48-month warranty** Whole machine warranty, including battery, motor and electric control system.
- 2 **Free parts by express** Non-human quality problems receive free replacement parts by express.
- 3 **20+ partner markets** Cooperative after-sales partners support covered countries and regions.
- 4 **Repair cost support** If no local partner is available, customers may find a local technician and we will bear reasonable repair costs.
- 5 **7x24 remote support** Operation, maintenance, troubleshooting and parts replacement guidance.
- 6 **48-hour response** Feedback is responded to within 48 hours; third-party on-site service can be coordinated when necessary.
- 7 **PI & contract terms** All after-sales terms can be clearly confirmed before order and written into PI and contract.



TRUSTED BY GLOBAL CUSTOMERS

Customer trust comes from real visits, repeat orders and stable demand.

High Sales Volume
Popular Models

Repeat Orders
Stable Demand

Customer Visits
Real Cooperation

Dealer Cooperation
Overseas Partners

CONTACT US

DAVID



WHATSAPP

+86 15705410172

EMAIL

david@litolon8.com

WEBSITE

www.litolon8.com

ADDRESS

Jinan High-tech Industrial Development Zone, Shandong, China